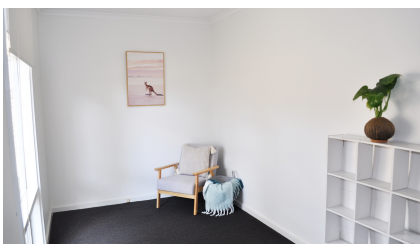




ABOUT BALYANA

The Balyana residence is nestled in a quiet location in the foothills of Clapham. Set back from the road, this peaceful area boasts open spaces, native trees and an array of wildlife. Balyana has a close-knit community of 60 residents in both apartments and share houses, who are often seen utilizing the outdoor BBQ area, and basketball court.

Our residential services are designed for you to be independent while providing support when needed. The Bedford team will work alongside you to ensure the support we provide meets your needs, but allows you the space to navigate your own life choices with a focus on self-advocacy. We provide a safe, community-focused space where you'll be supported to run your own home, whilst also connect with the wider community.



(08) 8275 0211



bedford@bedfordgroup.com.au



46 Strathcona Ave,
Clapham SA 5062



[https://bedfordgroup.com.au
/services/residential-services](https://bedfordgroup.com.au/services/residential-services)

"I was **supported** by staff at Balyana. I never knew that **support** makes you **strong**"

Harry, Balyana Resident

AMENITIES

Balyana is close to a number of restaurants, cafés and takeaway shops, with Pasadena Shopping Centre within walking distance (approx. 10-15 min walk). Public transport is nearby, providing easy access to the city, Mitcham Square and Marion Shopping Centre. Bedford staff provide support 24 hours a day, 7 days a week, and with Wi-Fi available, staying connected is never a problem.



PUBLIC
TRANSPORT



PARKS & RESERVES



SHOPPING



RESTAURANTS,
CAFES & TAKEAWAY



WIFI



24/7 SUPPORT

GET IN TOUCH

To enquire about vacancies at Balyana, or to book a tour, contact our friendly team.



(08) 8275 0211



bedford@bedfordgroup.com.au



46 Strathcona Ave,
Clapham SA 5062



<https://bedfordgroup.com.au/services/residential-services>

